

Continuing Medical Education



The Children's Hospital of Philadelphia®



The Penn Cardiovascular Institute, the Cardiac Center at the Children's Hospital of Philadelphia and the Center for Bioethics at the University of Pennsylvania

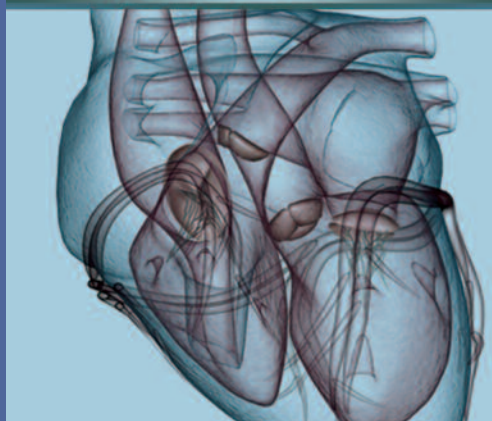
Present

ETHICS OF THE HEART II: ETHICAL AND POLICY CHALLENGES IN PEDIATRIC AND ADULT CONGENITAL HEART DISEASE

A CME-CERTIFIED COURSE

**Friday–Saturday,
March 16-17, 2012**

**BRB II/III Auditorium
Perelman School of Medicine
at the University of Pennsylvania
423 Curie Blvd
Philadelphia, PA**



TO VIEW THE
FULL BROCHURE AND TO
REGISTER ONLINE,
please visit
[http://cme.med.upenn.edu/
eventinfo_9254.html](http://cme.med.upenn.edu/eventinfo_9254.html)

FOR MORE INFORMATION, CONTACT:

Conference Coordinator
Perelman School of Medicine
at the University of Pennsylvania
Office of Continuing Medical Education
333 Blockley Hall, 423 Guardian Drive
Philadelphia, PA 19104-6021
TEL 215- 898-9800 or 215-898-8005
FAX 215-898-1888
penncme@mail.med.upenn.edu

COURSE DIRECTORS

Beth D. Kaufman, MD
Cardiomyopathy and Heart Failure Program
The Children's Hospital of Philadelphia
Perelman School of Medicine
at the University of Pennsylvania

James N. Kirkpatrick, MD
Cardiovascular Division
Center for Bioethics
Perelman School of Medicine
at the University of Pennsylvania



COURSE OVERVIEW & TARGET AUDIENCE

The purpose of this educational activity is to convene a multidisciplinary panel of nationally known experts to identify and discuss the most important ethical issues in congenital heart disease, providing a forum for clinicians, ethicists, chaplains, social workers, public health workers and trainees to discuss developments in this field. Participants will be enabled and encouraged to address these issues in research endeavors, quality improvement initiatives, and policy development and implementation at their home institutions.

This activity has been designed for clinicians who provide care to congenital heart disease patients, including physicians, nurses, chaplains, allied health professionals and psychologists; bioethicists, health policy/health administration specialists, public health professionals and trainees from each of these fields; and local, regional and national public health officials.

OBJECTIVES

- Address the ethical and policy challenges of transitions from pediatric to adult cardiovascular care systems
- Review current application and ethical complexities of mechanical circulatory support and heart transplantation for congenital heart disease patients
- Discuss the ethical dynamics of providing cost-conscious congenital heart disease care
- Incorporate the psychosocial, religious and spiritual needs of congenital heart disease patients and their families into care plans
- Explore issues related to quality of life, advance care planning and palliative care in pediatric and adult populations

ACCREDITATION

The Perelman School of Medicine at the University of Pennsylvania is accredited by the Accreditation Council for Continuing Medical Education (ACCME) to provide continuing medical education for physicians.

DESIGNATION OF CREDIT

The Perelman School of Medicine at the University of Pennsylvania designates this live activity for a maximum of 9.0 *AMA PRA Category 1 Credits*[™]. Physicians should claim only the credit commensurate with the extent of their participation in the activity.

DISCLOSURES

Perelman School of Medicine at the University of Pennsylvania, Office of Continuing Medical Education, adheres to the *ACCME Standards for Commercial Support*. Faculty disclosure information will be made available in the conference materials and syllabi. Faculty members are also expected to disclose to participants any discussions of off-label and/or investigational uses of pharmaceutical products within their presentations.

COURSE DIRECTORS

Beth D. Kaufman, MD
Medical Director, Cardiomyopathy and Heart Failure Program
The Cardiac Center, The Children's Hospital of Philadelphia
Assistant Professor of Pediatrics
Perelman School of Medicine at the University of Pennsylvania
Philadelphia, PA

James N. Kirkpatrick, MD
Assistant Professor of Medicine
Cardiovascular Division
Associate Fellow
Center for Bioethics
Perelman School of Medicine at the University of Pennsylvania
Philadelphia, PA

FEATURED FACULTY

Leonard L. Bailey, MD
Professor of Surgery and Pediatrics and Chief
Loma Linda University
Children's Hospital
Loma Linda, CA

Michael J. Landzberg, MD
Founder and Director
Boston Adult Congenital Heart and Pulmonary Hypertension Service
Boston, MA

Arthur L. Caplan, PhD
Emanuel and Robert Hart
Professor of Bioethics
Director, Center for Bioethics
University of Pennsylvania
Philadelphia, PA

Jack Rychik, MD
Associate Chief for Academic Affairs
Director, Fetal Heart Program and Single Ventricle Survivorship Program
The Cardiac Center, The Children's Hospital of Philadelphia
Professor of Pediatrics
Perelman School of Medicine at the University of Pennsylvania
Philadelphia, PA

J. William Gaynor, MD
Attending Cardiothoracic Surgeon
The Cardiac Center, The Children's Hospital of Philadelphia
Associate Professor of Surgery
Perelman School of Medicine at the University of Pennsylvania
Philadelphia, PA

Robert E. Shaddy, MD
Chief, Division of Cardiology
The Cardiac Center, The Children's Hospital of Philadelphia
Professor of Pediatrics
Perelman School of Medicine at the University of Pennsylvania
Philadelphia, PA

Sarah Goodlin, MD
President, Patient-centered Education and Research
Director of the Palliative Care-Heart Failure Education and Research (PC-HEART) Collaborative
Salt Lake City, UT

Gil Wernovsky, MD
Associate Chief, Division of Pediatric Cardiology
The Cardiac Center, The Children's Hospital of Philadelphia
Professor of Pediatrics
Perelman School of Medicine at the University of Pennsylvania
Philadelphia, PA

Adrienne Kovacs, PhD
Clinical and Health Psychologist
Toronto Congenital Cardiac Centre for Adults
at the University Health Network
Assistant Professor
Department of Medicine
University of Toronto
Toronto, Canada

John Lantos, MD
Director, Pediatric Bioethics
Professor, Pediatrics
University of Missouri-Kansas City
School of Medicine
Kansas City, MO