

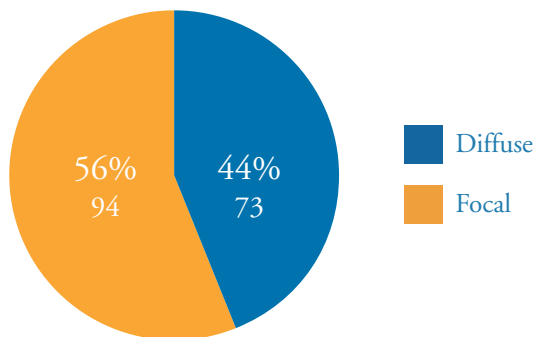


outcomes data

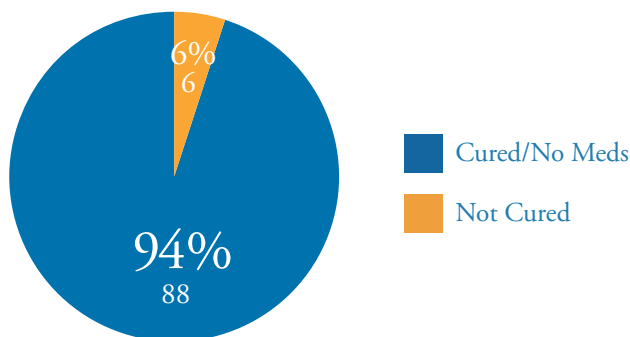
2004-2011

- The CHOP Hyperinsulinism Center sees more than 70 new cases each year, and about half are medically managed.
- The diagrams at right illustrate our surgical outcomes over a seven-year period, including a 94 percent cure rate in focal cases.
- Because more than half of focal lesions are in the head or head/body region on the pancreas, preoperative localization is critical. Additionally, 40 percent of cases with a focal lesion in the head of the pancreas required a pancreatic head resection with a Roux-en-Y pancreaticojejunostomy, a technique that has been pioneered with superb results here at CHOP.
- In addition, the CHOP Hyperinsulinism Center has cared for 23 rare HI cases, including those with atypical congenital HI, those with Beckwith-Wiedemann syndrome, and older children with acquired insulinomas.

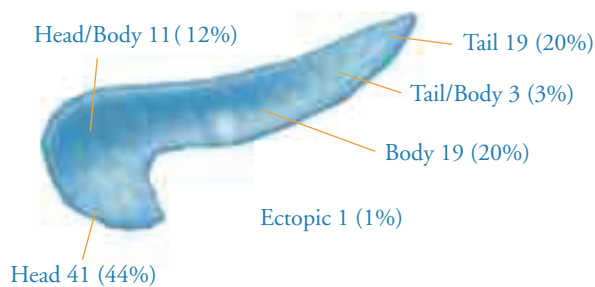
PATIENTS WITH FOCAL VS. DIFFUSE



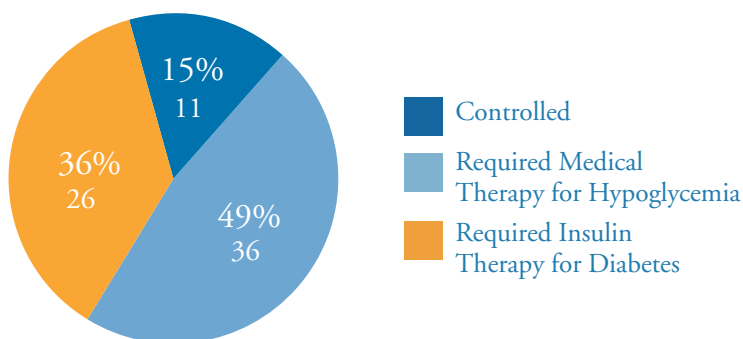
OUTCOMES OF FOCAL PATIENTS (94 CASES)



LOCATION OF FOCAL LESIONS



OUTCOMES OF DIFFUSE PATIENTS (73 CASES)



The Children's Hospital of Philadelphia®

CONGENITAL HYPERINSULINISM CENTER

referrals ■ appointments ■ information
215.590.7682 ■ hyperinsulinism.chop.edu